



## DL16-25-TDMA DATA LINK

### GENERAL DESCRIPTION

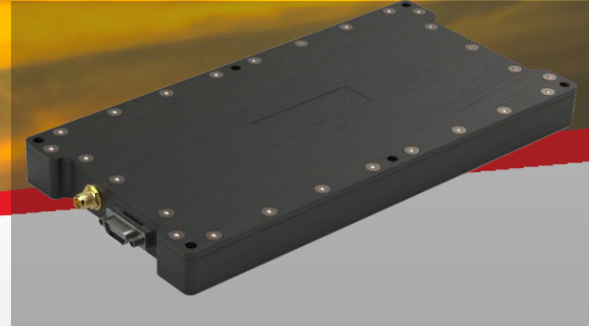
Magnetron Data Link is especially developed for point-to-point applications. Because of lightweight design, low power consumption and easy system integration Magnetron Data Link suitable for stationary and mobile platforms.

### KEY SPECIFICATIONS

- SDR Based Structure
- Point to Point or Point to Multipoint
- Relay Capability
- Participants are able to Automatically Join, Rejoin or Leave Network
- Mesh Network Structure with Swarm Capability
- Up to 20 Mbps Data Rate
- Optional H.264 Video Encoder/Decoder
- Optional AES 256 Encryption
- Forward Error Correction

# DL16-25-TDMA DATA LINK

**MAGNETRON**



## TECHNICAL DATA

### Electrical

Frequency Range	1 GHz to 6 GHz
RF Output Power	25 Watt
Modulation	CPFSK/MSK/BPSK/QPSK/DSSS
Data Rate	Up to 20 Mbps
Interfaces	UDP/TCPRS-232/422/485
FEC	Reed Solomon (Optional)
Data Encryption	AES256 (Optional)
RF Connector	SMAN-Type
Connector	Micro-D 15 Pin
Operating Voltage	18-32 VDC

### Environmental Test Standards

Mechanical	MIL-STD-810G
EMI/EMC	MIL-STD-461F

### Mechanical

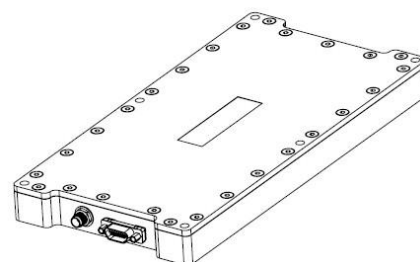
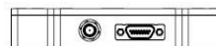
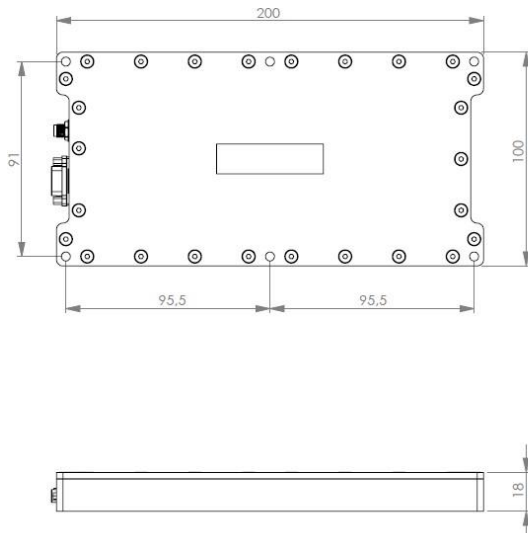
Material	6061 Aluminum Alloy
Surface Finish	Anodized
Dimension (mm)	200x100x18
Weight (g)	650

### Operating Conditions

Temperature	-40°C to +85°C
Humidity	%95 R.H.
Altitude	50000ft

### Storage Conditions

Temperature	-40°C to +85°C
Humidity	%95 R.H.
Altitude	50000ft



All units in mm