

## STATIONARY TRACKING SYSTEM

### GENERAL DESCRIPTION

Stationary Tracking System is a stationary system designed for long distance point-to-point tracking applications. Which is based on Vega 50 Pan-Tilt Positioner.

With an internal heating module, it can be operated 7/24 in extreme outdoor conditions.

System suitable for Magnetron Data Link communication module. These two systems can work in combined with each other.

Payloads up to 50 Kg and different antenna types can be used in tracking applications.

Thanks to the built-in compass and GPS module, the system automatically finds its own position and true north direction when it is turned on.



### KEY SPECIFICATIONS

- 7/24 Outdoor Usage
- Up to 50 Kg Payload Capacity
- Compatible with Wide Range of Antennas

# STATIONARY TRACKING SYSTEM

**MAGNETRON**

## TECHNICAL DATA

### Mechanical

<b>Pan Speed</b>	0.0008 RPM to 20 RPM (0.005°/s - 120°/s)
<b>Tilt Speed</b>	0.0008 RPM to 15 RPM (0.005°/s - 90°/s)
<b>Pan Angle</b>	720° or Nx360° (Slip-Ring)
<b>Tilt Angle</b>	±90° (180°)
<b>Payload Capacity</b>	50Kg
<b>Resolution</b>	0.005°
<b>Position Repeatability</b>	0.01°
<b>Backlash</b>	0.12°
<b>Rotational Limits</b>	Fixed and Programmatically Adjustable
<b>Motor Type</b>	Hybrid Servo Motor
<b>Material</b>	Stainless Steel
<b>Surface Finish</b>	Powder Coated
<b>Dimension (mm)</b>	1570x800x315
<b>Weight (Kg)</b>	35Kg

### Environmental Test Standards

<b>Mechanical</b>	MIL-STD-810G
<b>EMI/EMC</b>	MIL-STD-461F

### Electrical

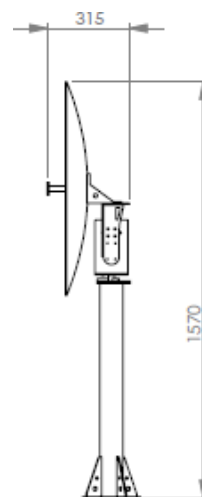
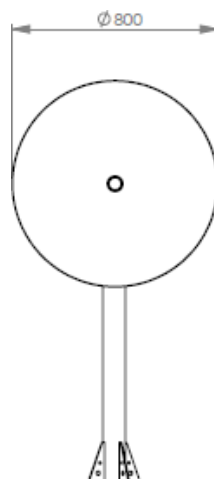
<b>Tracking</b>	GPS/RSSI
<b>True North Calibration</b>	Compass/DGPS
<b>Antenna Type</b>	Patch/Dish/Yagi
<b>Operating Voltage</b>	18-48 VDC (220 VAC Optional)
<b>Current Consumption</b>	Max. 5A @ 24 VDC
<b>Heater (Adjustable)</b>	Max. 25 Watt
<b>Position Feedback</b>	Optical Encoder
<b>Control Interface</b>	Ethernet, RS-232/422/485
<b>Control Protocol</b>	Magnetron ACU, Pelco-D
<b>Connectors</b>	MIL-DTL-38999
<b>Sensors</b>	Pressure, Temperature, Humidity, RTC, Gyroscope
<b>MTBF</b>	45.000 hour

### Operating Conditions

<b>Temperature</b>	-40°C to +60°C
<b>Humidity</b>	%95 R.H.
<b>Altitude</b>	50000ft
<b>IP Rating</b>	IP67

### Storage Conditions

<b>Temperature</b>	-40°C to +70°C
<b>Humidity</b>	%95 R.H.
<b>Altitude</b>	50000ft



All units in mm