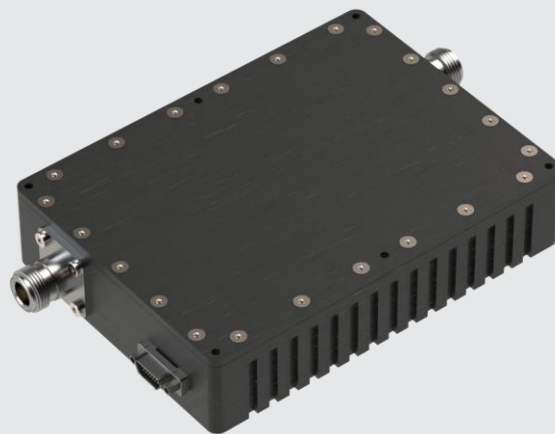




# RF BROADBAND AMPLIFIERS

## GENERAL DESCRIPTION

Magnetron RF Broadband Amplifiers designed to work in outdoor environments. Modules could be ordered for other frequency and power ranges.



Model	Frequency Range	Gain	Pout	PAE	Supply Voltage	Control Interfaces
AMPMAG-1	1 GHz to 8 GHz	30 dB	20Watt	30%	1350mA@28VDC	RS-232
AMPMAG-2	2 GHz to 6 GHz	30 dB	>100 Watt	40%	2000mA@28VDC	RS-232
AMPMAG-3	6 GHz to 18 GHz	30 dB	>100 Watt	35%	2500mA@28VDC	RS-232
AMPMAG-4	2 GHz to 18 GHz	30 dB	50Watt	20%	4000mA@28VDC	RS-232